

HENRIKSEN HOOKS

HOOKS
HENRIKSEN HOOKS

BOLT SET

FOR HOOK, ADAPTER AND SWIVEL



U
S
E
R

M
A
N
U
A
L

Rev.: A2

M000581

HENRIKSEN

REDUCING OPERATIONAL RISK

Phone: +47 33 37 84 00
hooks@hhenriksen.com
www.henriksenhooks.com

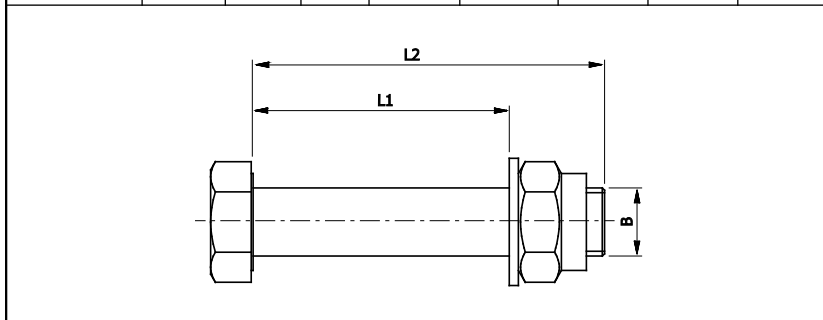
BOLT SET

SELECTION

Apply bolts to connect:

- the hook to the swivel joint
- the hook or the swivel joint to the Henriksen adapter
- the hook or the swivel joint to the lifting arrangement of the boat.⁽¹⁾

Part number	WLL	Dimensions (mm) minimum A4-70			Max. torque (Nm)	Between		
		L1 ⁽²⁾	L2	B		hook - adapter	hook - swivel	swivel - adapter
HH000217	3,5	42	75	M24	70		X	
HH000218	3,5	52	80	M24	70	X		X
HH000219	5 / 8	53	90	M30	70		X	
HH000212	5 / 8	73	110	M30	70	X		X
HH000517	12	118	150	M30	70	X	X	X
HH000681	15	75	163	Ø40 / M36 ⁽³⁾	70	X	X	



- (1) Use correct bolt diameter according to the WLL of the hook.
The length of the bolt is specified by the boat builder.
The bolt should be unthreaded in the lifting cross-section.
- (2) Unthreaded length.
- (3) Stud bolt: shaft Ø40 with M36 threaded ends, EN 1.4462 quality.

NOTE: Remember to place the washer on the locknut side if applicable.